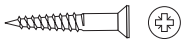


BASE UNIT

These illustrations are not indicative of final size or dimensions of flatpack units supplied.
 These instructions assist in assembly, final size of unit is based on customers order requirements.

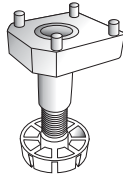
45mm Wood Screws x 19



28mm Wood Screws x 30



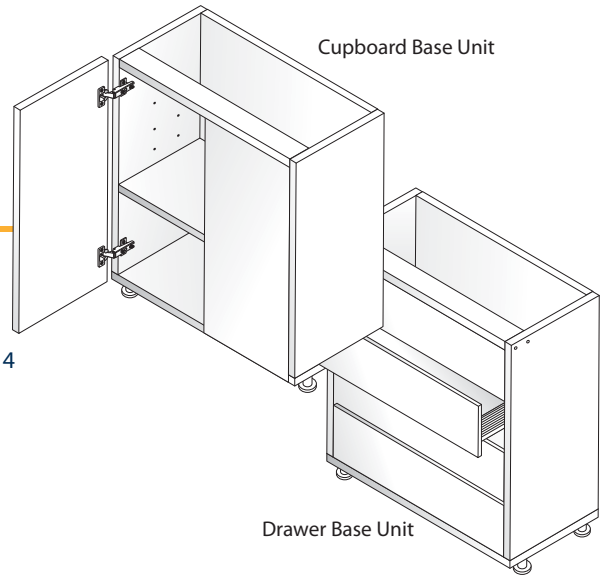
Adjustable Legs x 4



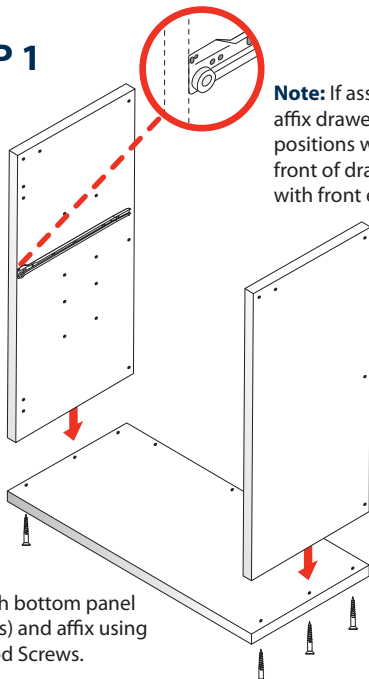
Shelf Supports x 4



End Cap x 10



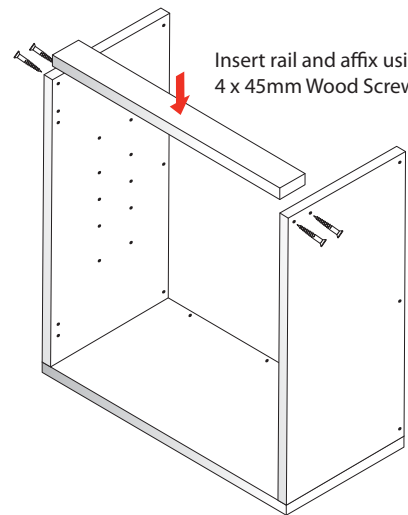
STEP 1



Align sides with bottom panel (drill pilot holes) and affix using 6 x 45mm Wood Screws.

Note: If assembling a drawer unit, affix drawer runners to pre-marked positions with screws. Ensure the front of drawer runner is aligned with front edge of side panel.

STEP 2



Insert rail and affix using 4 x 45mm Wood Screws.

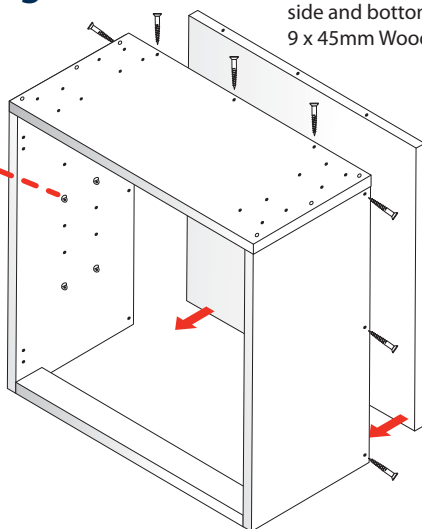


Note: To avoid possible split in panel ends it is recommended a pilot hole is made using 1/8" or 3mm bit.

STEP 3



Shelf supports can be inserted where shelves are required.

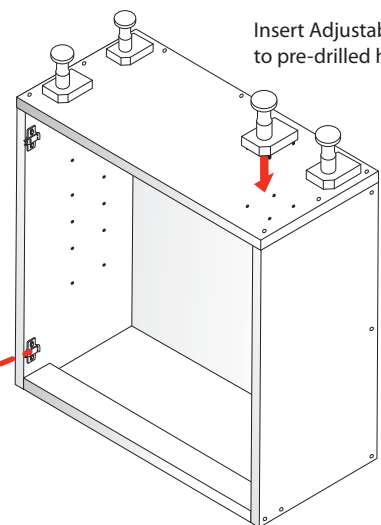


Back panel is fixed to inside of side and bottom panels using 9 x 45mm Wood Screws.

STEP 4



If required for door assembly, insert and screw in door hinge plate here.



Insert Adjustable Legs in to pre-drilled holes.

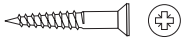
STEP 5

- Check all screws are tight and insert end plugs to cover screws where necessary.
- Fit unit doors or drawers if required, please see overleaf for more detail. →

WALL UNIT

These illustrations are not indicative of final size or dimensions of flatpack units supplied.
 These instructions assist in assembly, final size of unit is based on customers order requirements.

45mm Wood Screws x 24



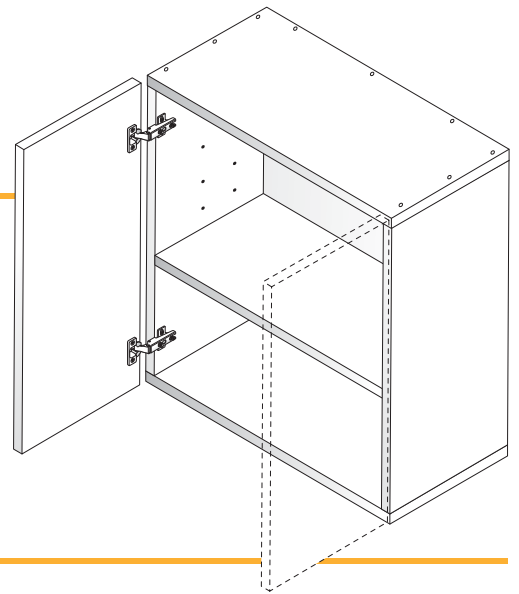
28mm Wood Screws x 30



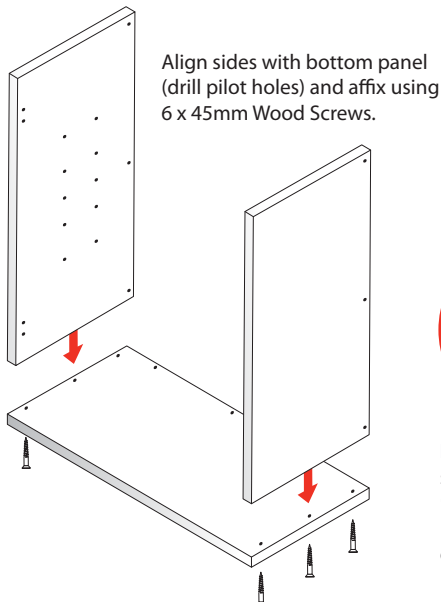
Shelf Supports x 4



End Cap x 10



STEP 1

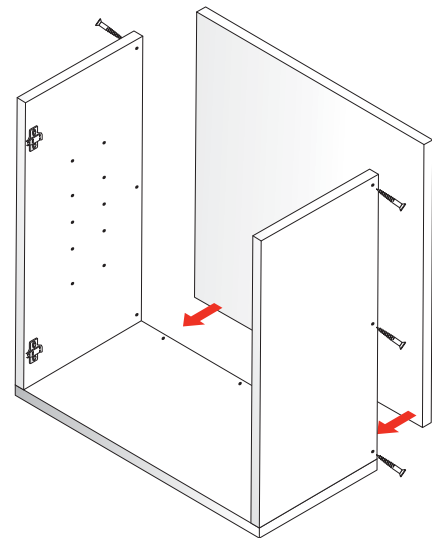


STEP 2

Back panel is fixed to inside of side and bottom panels using 9 x 45mm Wood Screws.

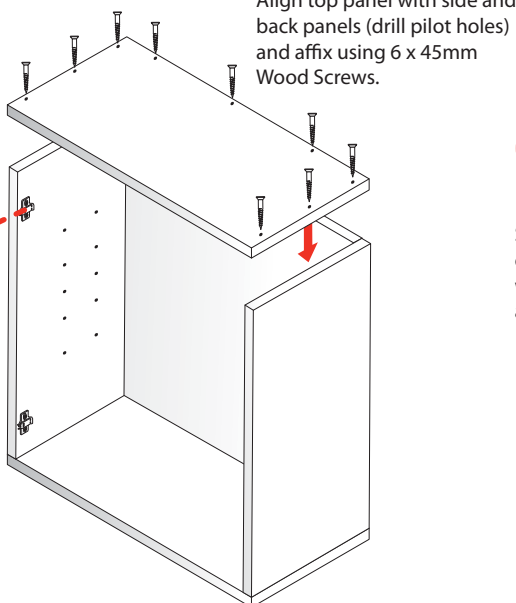


Note: To avoid possible split in panel ends it is recommended a pilot hole is made using 1/8" or 3mm bit.



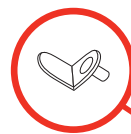
STEP 3

If required for door assembly, insert and screw in door hinge plate here.

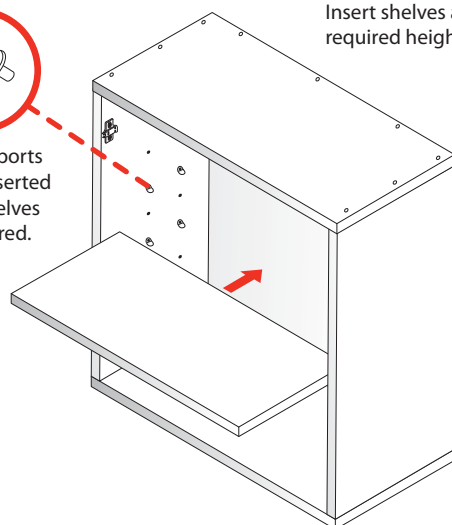


STEP 4

Insert shelves are required heights.



Shelf supports can be inserted where shelves are required.



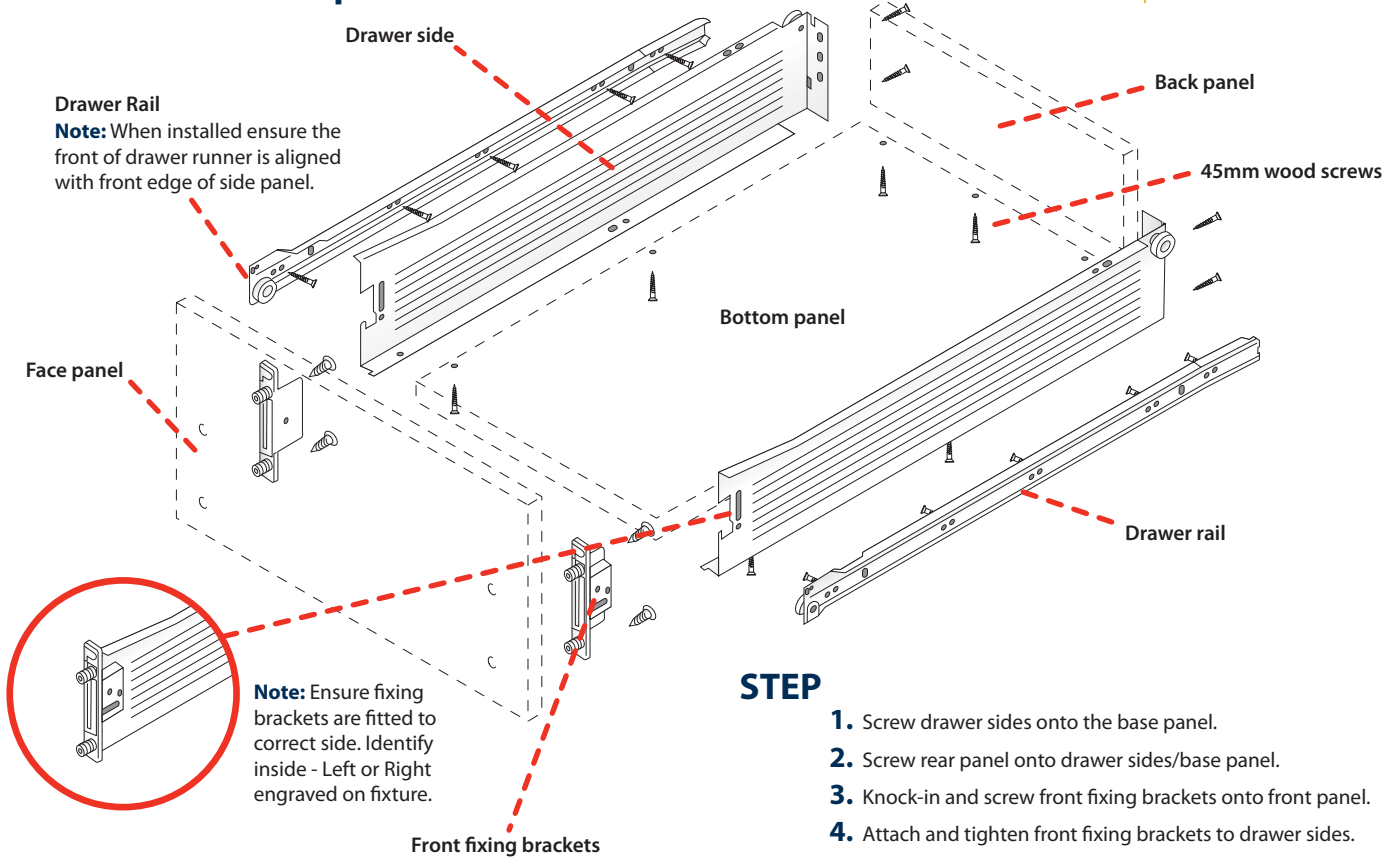
STEP 5

- Check all screws are tight and insert end plugs to cover screws where necessary.
- Fit unit doors or drawers if required, please see overleaf for more detail. →

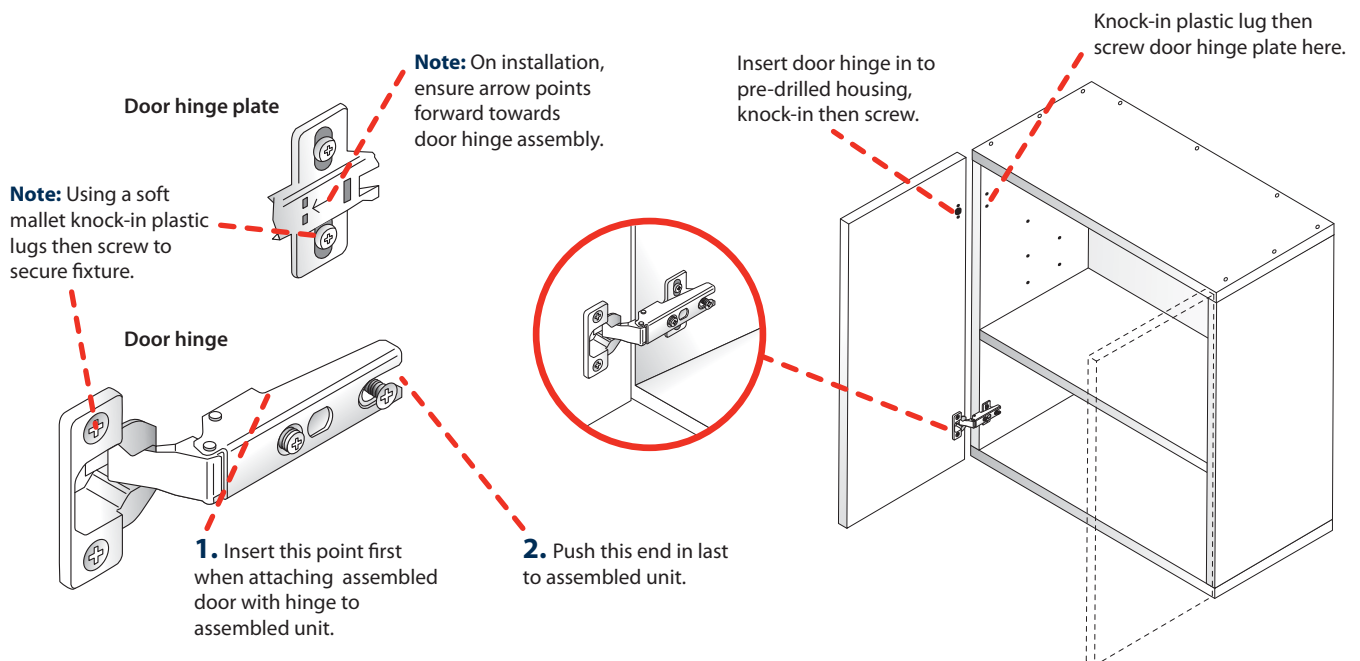
DOORS AND DRAWS ASSEMBLY

45mm Wood Screws x 3 | 15mm Wood Screws x 22

Drawer components



Door components



Unit assembly

To screw completed units together, please pre-drill through one side and join units with 28mm screws.